

FOR LEASE

**FREE STANDING
RETAIL BUILDING
DOWNTOWN BOISE**

**510 MAIN STREET
BOISE, IDAHO 83702**



**INTERMOUNTAIN
COMMERCIAL REAL ESTATE**

380 E. PARKCENTER BOULEVARD
SUITE 290
BOISE, IDAHO 83706
WWW.ICRELLC.COM
208-429-8603 OFFICE
208-429-8604 FAX



Date Available: February 2010

Offered For: Lease

Available Space: 1,469 - 2006SF

Rental Rate: \$18.00

Lease Type: NNN

Lease Term: 3-5 years

Property Type: Retail

- Located in the heart of Old Boise Historic District
- Great visibility
- On-site parking (fee based)



TIM THORNTON, SCLS
TIM@ICRELLC.COM
208-429-8603 OFFICE
208-861-0357 CELL

12/4/2009

THE INFORMATION HAS BEEN OBTAINED FROM SOURCES BELIEVED RELIABLE AND, WHILE WE DO NOT DOUBT ITS RELIABILITY, ICRE, HAS NOT VERIFIED IT AND MAKES NO GUARANTEES, WARRANTIES OR REPRESENTATIONS, EXPRESSED OR IMPLIED, AS TO ITS ACCURACY, ALL INTERESTED PARTIES SHOULD CONDUCT THEIR OWN INDEPENDENT INVESTIGATION AND RELY ON THOSE RESULTS.

INTERIOR



INTERMOUNTAIN COMMERCIAL REAL ESTATE

380 E. PARKCENTER BOULEVARD
SUITE 290
BOISE, IDAHO 83706
WWW.ICRELLC.COM
208-429-8603 OFFICE
208-429-8604 FAX

510 MAIN STREET

BOISE, IDAHO 83702



TIM THORNTON, SCLS

TIM@ICRELLC.COM

208-429-8603 OFFICE

208-861-0357 CELL

THE INFORMATION HAS BEEN OBTAINED FROM SOURCES BELIEVED RELIABLE AND, WHILE WE DO NOT DOUBT ITS RELIABILITY, ICRE, HAS NOT VERIFIED IT AND MAKES NO GUARANTEES, WARRANTIES OR REPRESENTATIONS, EXPRESSED OR IMPLIED, AS TO ITS ACCURACY, ALL INTERESTED PARTIES SHOULD CONDUCT THEIR OWN INDEPENDENT INVESTIGATION AND RELY ON THOSE RESULTS.

SITE PLAN

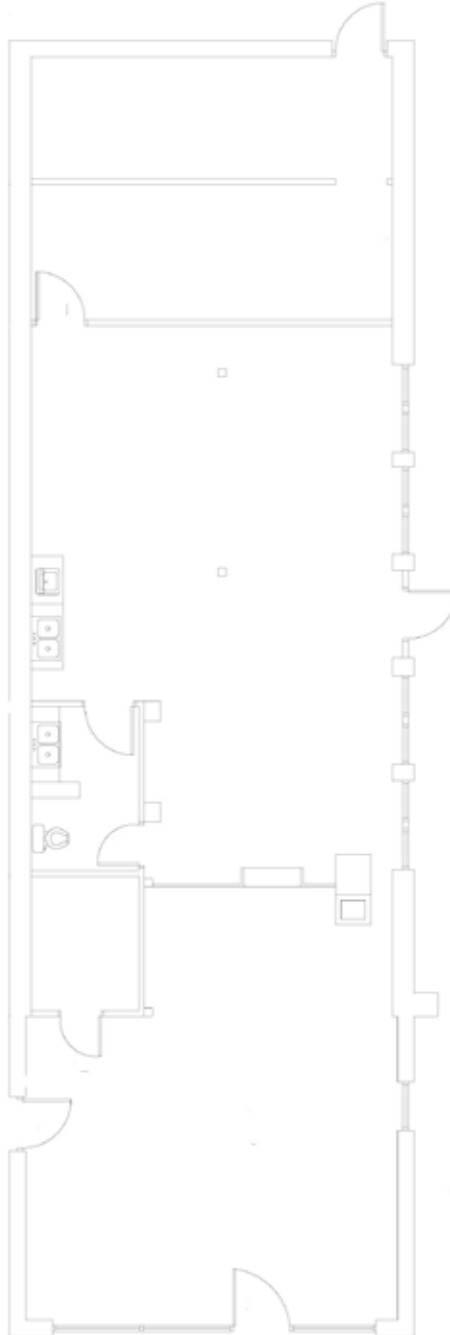


INTERMOUNTAIN
COMMERCIAL REAL ESTATE

380 E. PARKCENTER BOULEVARD
SUITE 290
BOISE, IDAHO 83706
WWW.ICRELLC.COM
208-429-8603 OFFICE
208-429-8604 FAX

510 MAIN STREET

BOISE, IDAHO 83702



Front

IM THORNTON, SCLS
TIM@ICRELLC.COM
208-429-8603 OFFICE
208-861-0357 CELL

THE INFORMATION HAS BEEN OBTAINED FROM SOURCES BELIEVED RELIABLE AND , WHILE WE DO NOT DOUBT ITS RELIABILITY, ICRE, HAS NOT VERIFIED IT AND MAKES NO GUARANTEES, WARRANTIES OR REPRESENTATIONS, EXPRESSED OR IMPLIED, AS TO ITS ACCURACY, ALL INTERESTED PARTIES SHOULD CONDUCT THEIR OWN INDEPENDENT INVESTIGATION AND RELY ON THOSE RESULTS.